

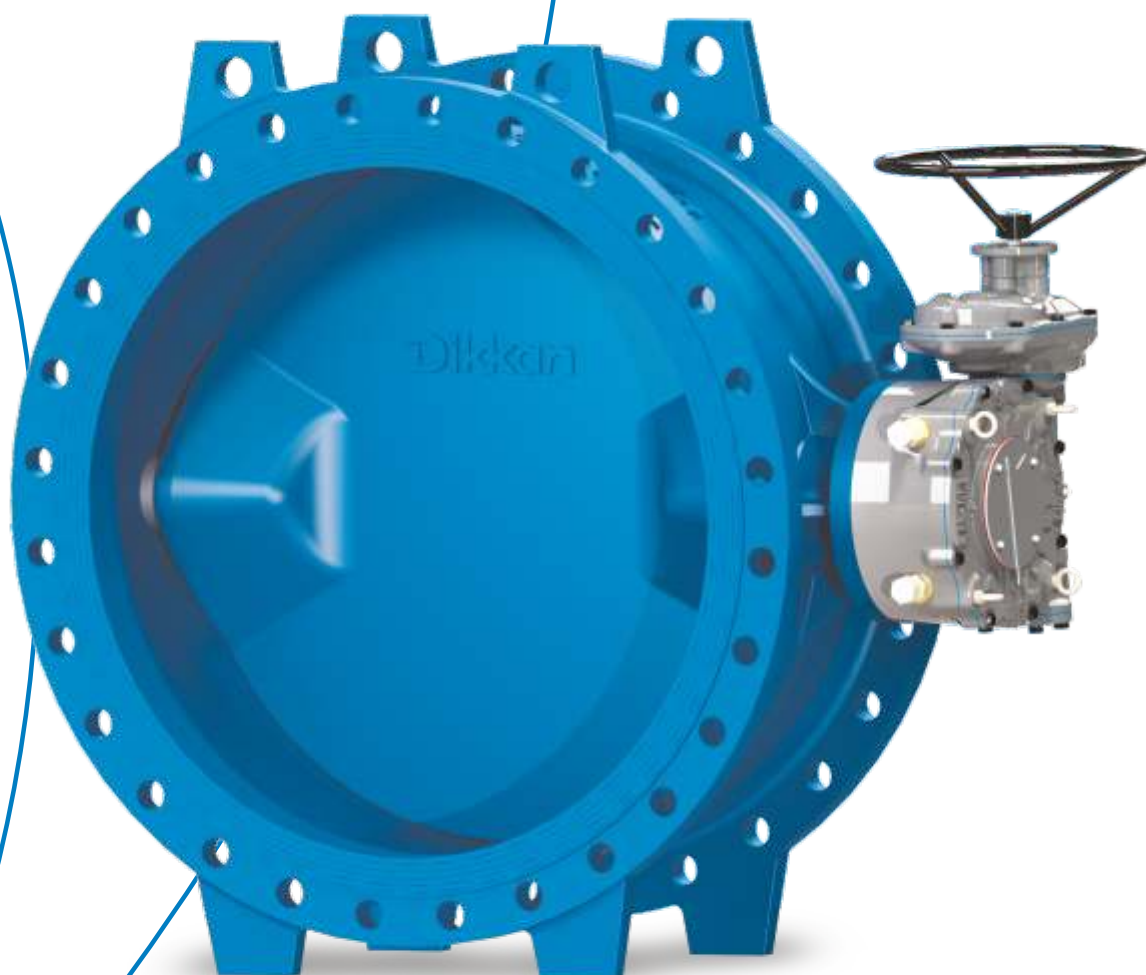
# Flow to the future

BUTTERFLY - 2024 / EN



**Ocean**  
Series

## Double Eccentric Butterfly Valve



**Dikkan**valve



## Flow to the future



We design our products by taking into consideration the continuity of life and water, which is an integral part of the life itself, and undertaking the responsibility of the life.

We design future friendly products and produce them for sustainable life. Oceans have become an inspiration for the designs of our products, as they are for our planet being called the "Blue Planet", whose three quarters are comprised of water and which is blue looking at it from the space. We are manufacturing for the life by designing future-friendly products.

We use the excellence, creativity, technology and sustainability in the oceans' wisdom, habitat and natural cycle in our Ocean Series products.



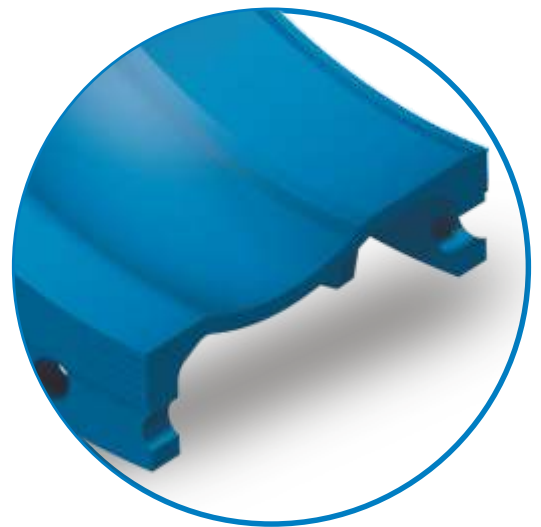
## Valve

- Welding overlay micro finished and polished seat
- Minimum resistance against to sealing ring
- Stainless steel welding
- IP68 Protection Class
- Burried Service (optional)
- Easy Connection for Actuator, Cap and Extension Spindle



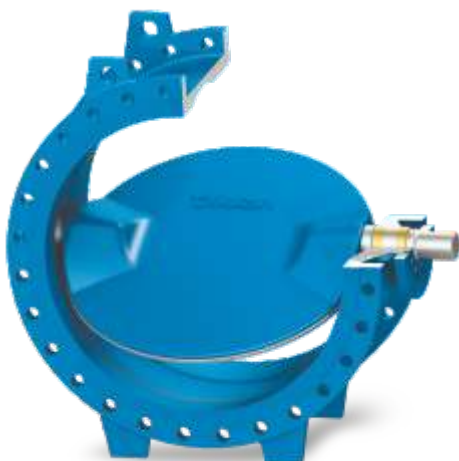
## Body

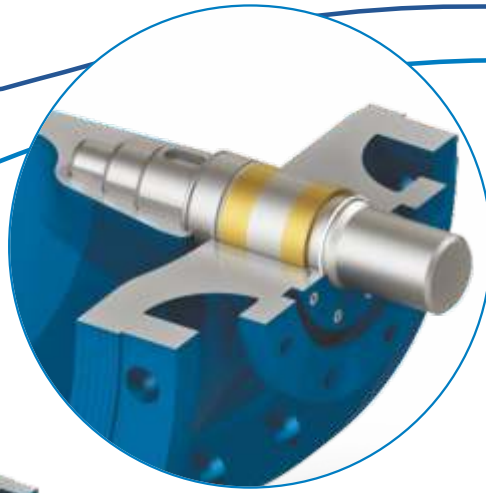
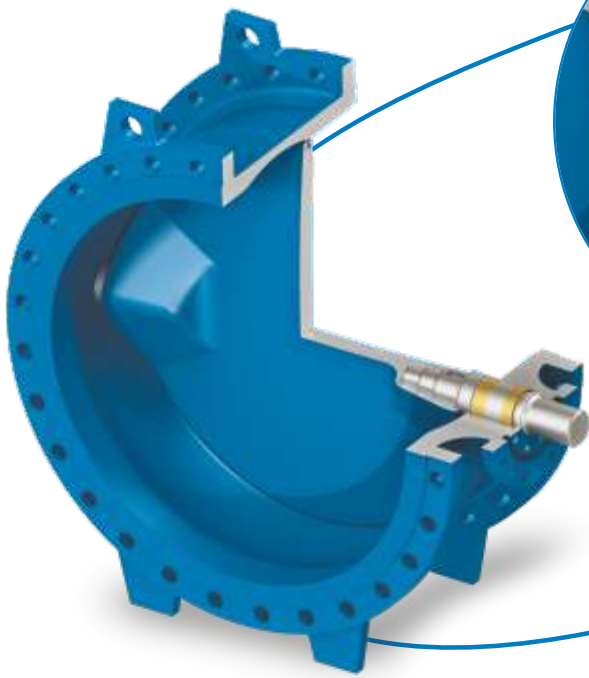
- Streamlined body design
- Maximum internal bore
- Less friction on seat
- Maximized flow section (up to 20%)



## Disc

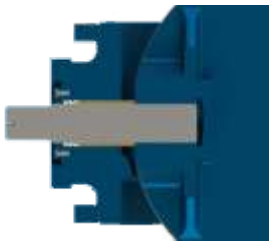
- Unique disc design
- Minimum head loss





## Shaft

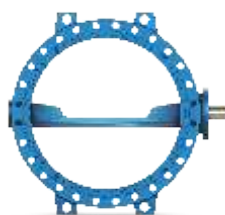
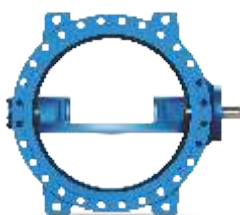
- Dry shaft design
- Stepped shaft design
- Self lubricating bearing system



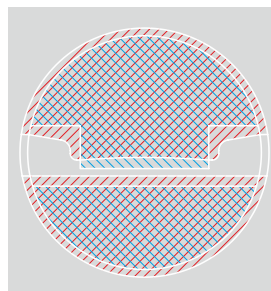
## Two-piece bearing less friction

Ocean  
Series

## Curved full bore structure less turbulence



Ocean  
Series



## Flow area min. **%20** improvement



# Technical Data

## Double Eccentric Butterfly Valve

### Design standard

- DIN EN 593

### Face-to-face dimension

- EN558 series 14

### Sizes

- DN 150 - DN 1400 PN 10
- DN 150 - DN 1400 PN 16

### Flange Drilling

- PN10 to PN16 acc.
- to EN 1092-2

### Medium Temperature

- 0°C to 40°C

### Coating:

- Fusion bonded epoxy 300 µm WRAS (powder epoxy)

### Materials

- Internal / External Fixings in A4
- Retaining ring AISI316
- Shaft 1.4021, optional 1.4057, Duplex
- Sealings EPDM, optional NBR or VITON
- Body/disc EN-GJS-400-15, optional EN-GJS-500-7, EN-GJS-400-18-LT

### Connection and flanges

- ANSI, BS, AS flanges

### Gearbox

- Mechanical position indicator
- Limit switches
- Anti-clockwise closing
- Additional flange foot for stabilization
- Locking system for maintenance of gearbox

## Application Areas

- Water treatment
- Water transmission
- Water distribution network
- Dams and hydro power





Dismantling Joint



Double Eccentric  
Butterfly Valve



Swing Check Valve

**Dikkan**valve

İzmir Kemalpaşa Yolu  
Hayıtlıkır Mevkii No.30  
Kemalpaşa - İzmir  
TÜRKİYE

**P:** +90 232 877 17 14

**F:** +90 232 877 17 15

info@dikkan.com

www.dikkan.com